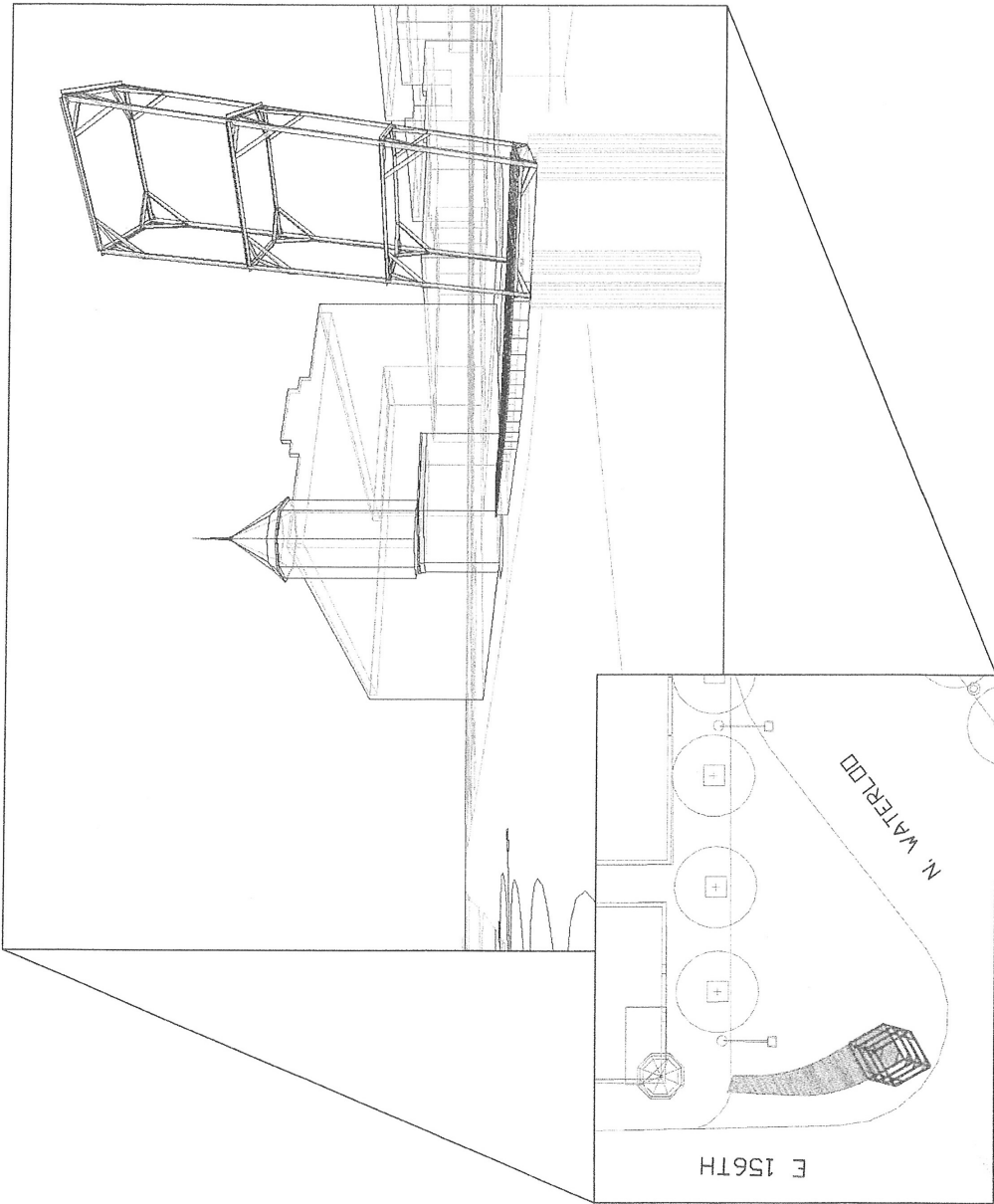
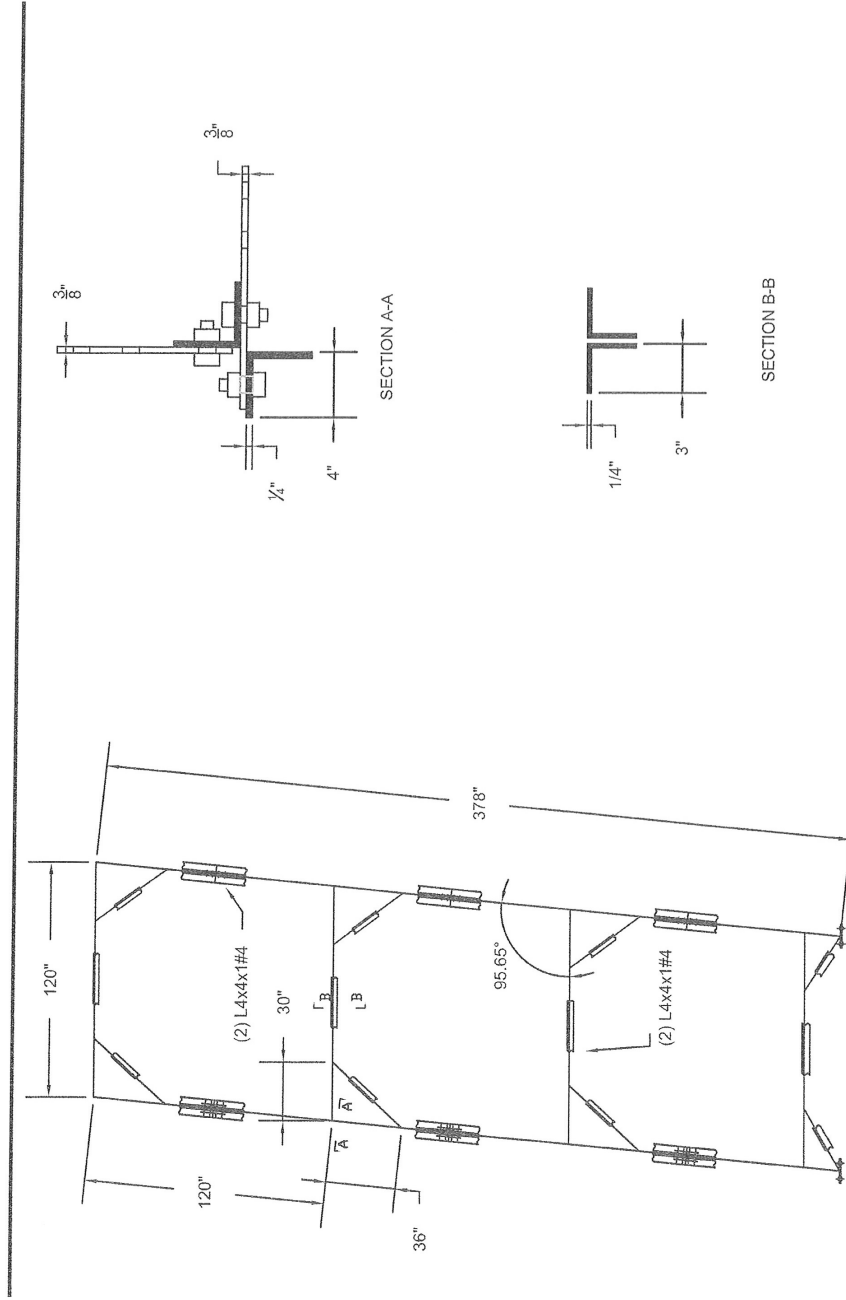
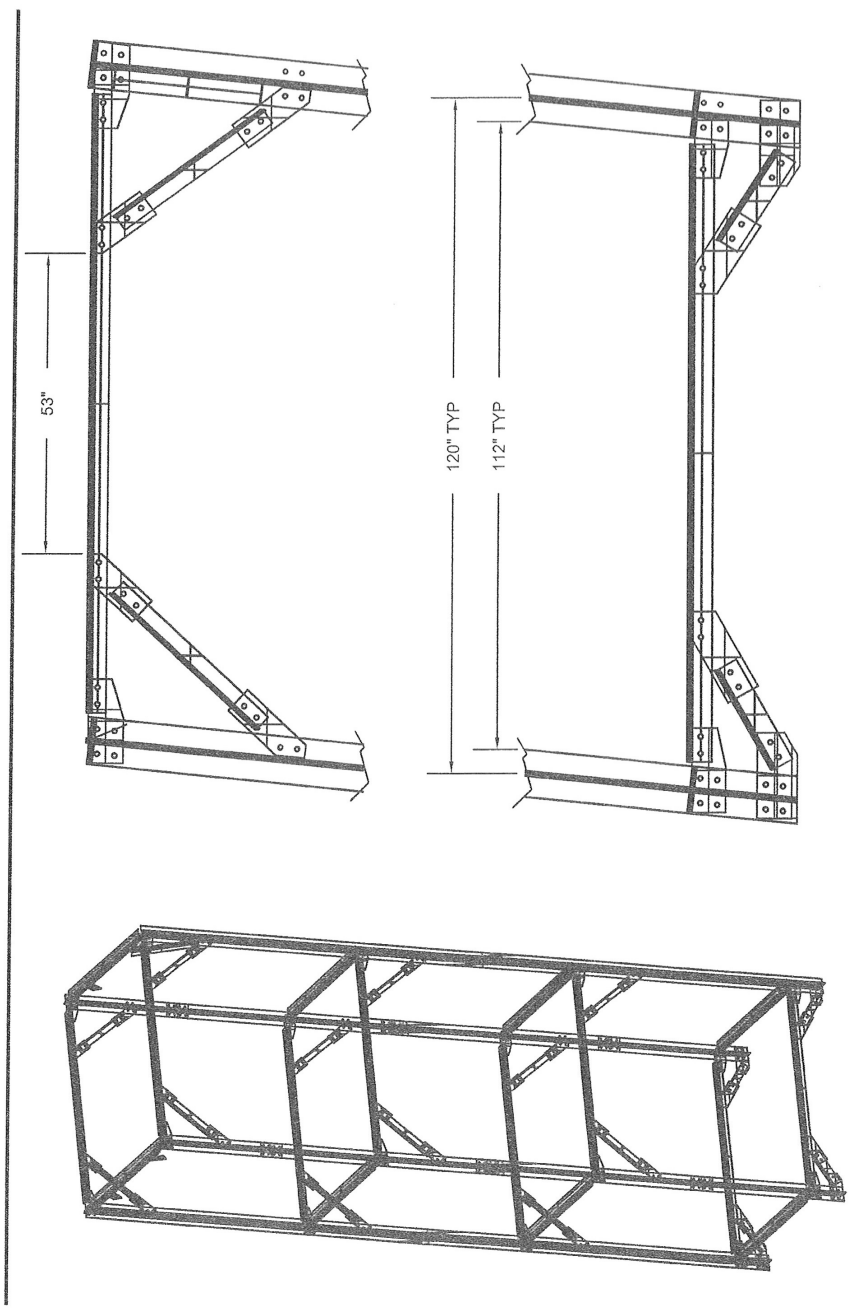


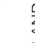
TOWER DRAWINGS AND SPECIFICATIONS (provided here for informational purposes only)

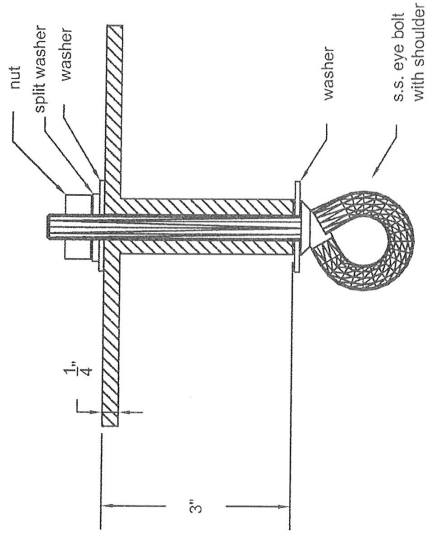
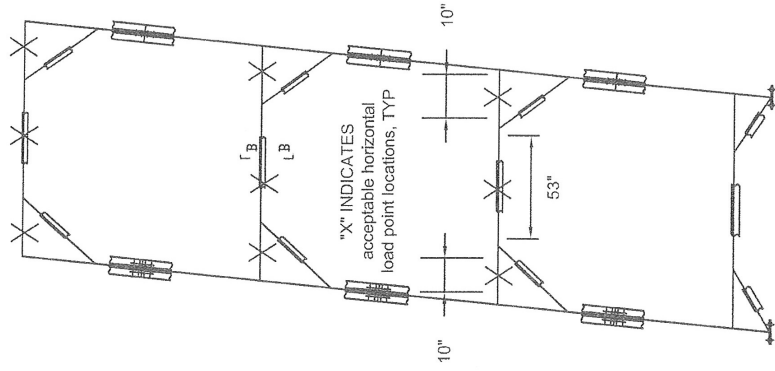




NTH PROJECT NO.:	DESIGNED BY:	CHECKED BY:	DRAWING SCALE:	<div data-bbox="1258 1144 1291 1186" data-label="Image"> </div> <div data-bbox="1258 997 1315 1134" data-label="Text"> <p>Moritz Wood & Metal Design and Fabrication Services Cincinnati, OH 45246-0738</p> </div>	E156TH AND N. WATERLOO	WATERLOO TOWER	A	2
CAD FILE NAME:	DRAWN BY:	DATE:	PLOT DATE:					



NTH PROJECT NO.: CAD FILE NAME:	DESIGNED BY: CD MM DRAWING: MM	CHECKED BY: DATE: 8.20.10	DRAWING SCALE: NTS PLOT DATE:	 Moritz Wood & Metal Design and Fabrication Services Cincinnati, OH 45240-0708	E156TH AND N. WATERLOO	WATERLOO TOWER	A 3
------------------------------------	--------------------------------------	------------------------------	-------------------------------------	--	------------------------	-------------------	-----



SECTION B-B

WITH EYE BOLT - 200 lb. vertical load

NOTE: EYE POSITION AND LOAD ANGLE

- * EYE BOLT IS TO BE ROTATED SO THAT LOAD IS IN SAME DIRECTION AS EYE ROTATION.
- * EYE BOLT LOAD RATING CHANGES AS LOAD ANGLE CHANGES.

NTH PROJECT NO.: DESIGNED BY: CAD FILE NAME:	CD MM MM	CHECKED BY: DATE:	8.20.10 MM	DRAWING SCALE: NTS PLOT DATE:	Moritz Wood & Metal Design and Fabrication Services Columbus, OH 43228-1008	WATERLOO TOWER E156TH AND N. WATERLOO	ATTACHMENT POINTS ALL HORIZONTAL MEMBERS	4
--	-------------	----------------------	---------------	-------------------------------------	--	--	---	---